



Canterbury
JKB LIVING







Modern Farmhouse - Elevation

SPACIOUS FAMILY- FOCUS PLAN

This plan's generous spaces adapt beautifully to families and evolving needs. Ideal for those seeking room to grow and modern functionality in Turlock.

**HOME 2
FEATURES**

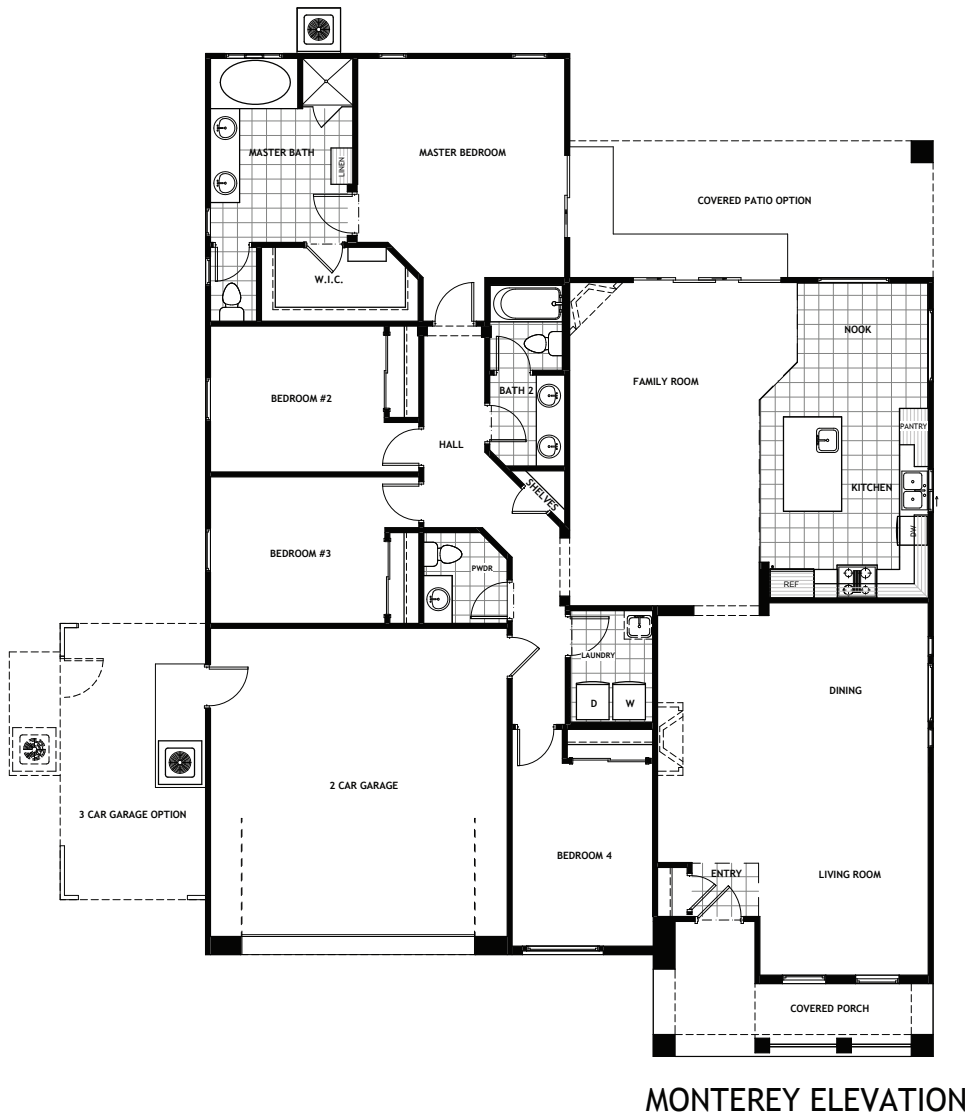
 4-5 Bedrooms	 2.5 Bathrooms
 2-3 Car Garage	 2,286 Square Footage



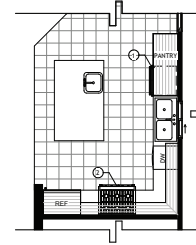
Monterey - Elevation



Modern Prairie - Elevation

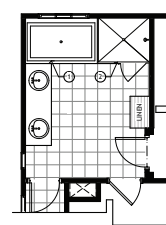


KITCHEN - UPGRADE OPTION



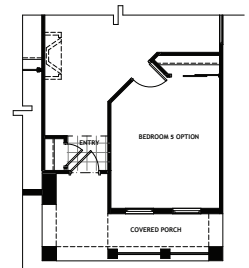
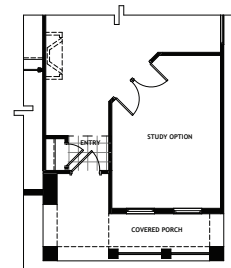
- ① BUILT IN MICROWAVE & OVEN OPTION
- ② GAS COOKTOP

M. BATH - UPGRADE OPTION

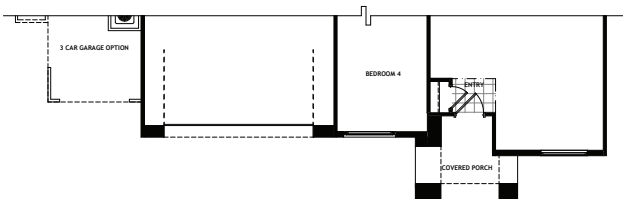


- ① FREESTANDING TUB
- ② CURBLESS SHOWER WITH TEMPERED GLASS ENCLOSURE

BEDROOM 5 OPTION



MODERN FARMHOUSE ELEVATION



MODERN PRAIRIE ELEVATION

