



Canterbury
JKB LIVING



HOME 3 FEATURES



4-5

Bedrooms



3.5

Bathrooms



2-3

Car Garage



2,594

Square Footage

Mid Century Modern - Elevation

REDEFINING MODERN LIVING

Thoughtfully crafted to balance sophistication and practicality. Ideal for those who appreciate a heightened living experience in Turlock.



Modern Prairie - Elevation



Modern Farmhouse - Elevation

JKB LIVING
Built For A Lifetime

JKBLiving.com
(209) 495-8200

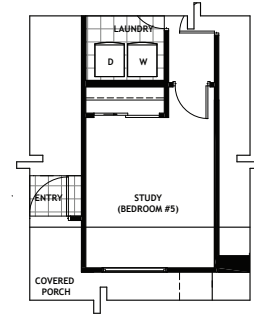
In a continuous effort to improve our product, JKB Living Inc. reserves the right to make changes or modifications to renderings, floorplans, pricing, standard features, options & other building specifications & dimensions without prior notice. Please see sales representative for details. Square footage is approximate based upon design. Floorplans and renderings are artist conception and are subject to change. HomeSmart PV & Associates BRE#01400749



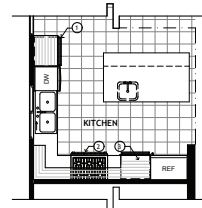


MODERN PRAIRIE ELEVATION

BEDROOM #5 OPTION

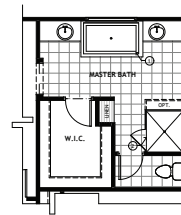


KITCHEN - UPGRADE OPTION



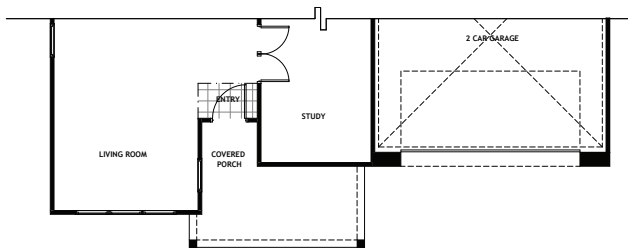
- ① BUILT IN DOUBLE OVENS
- ② GAS COOKTOP
- ③ BUILT IN MICROWAVE

M. BATH - UPGRADE OPTION



- ① FREESTANDING TUB
- ② CURBLESS SHOWER WITH TEMPERED GLASS ENCLOSURE OR EXTENSION

MODERN FARMHOUSE ELEVATION



MID CENTURY MODERN ELEVATION

