



Canterbury
JKB LIVING



HOME 5 FEATURES



4

Bedrooms



3

Bathrooms



3-4

Car Garage



2,897

Square Footage

Modern Farmhouse - Elevation

INVITING MODERN ELEGANT RETREAT

Crafted for convenience and modern appeal.
A single-level approach that suits those seeking an
efficient yet elegant design.



Mid Century Modern - Elevation



Spanish - Elevation

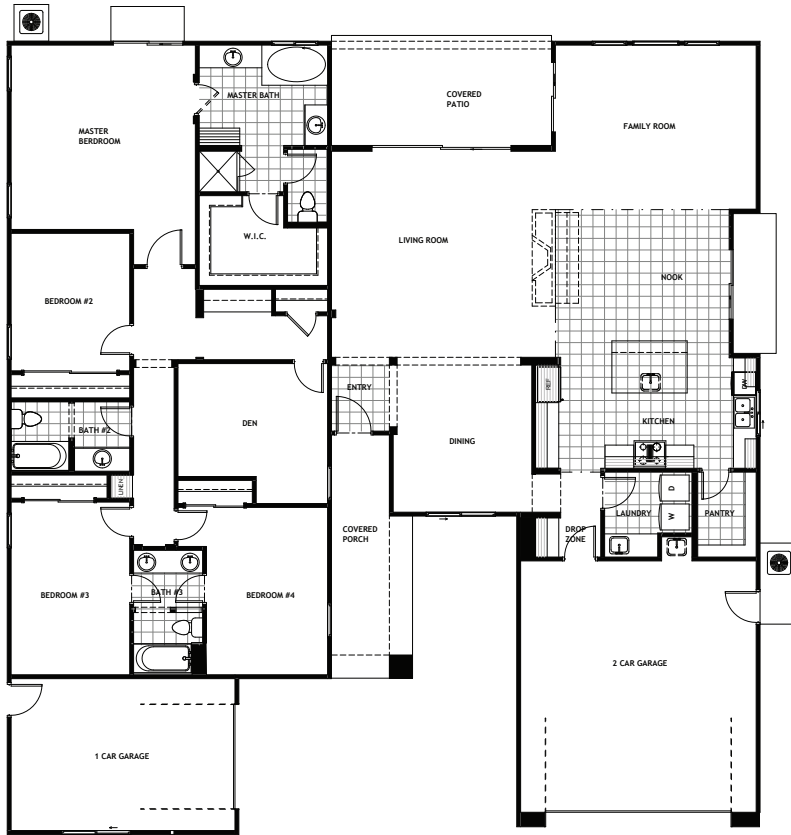
JKB LIVING
Built For A Lifetime

JKBLiving.com
(209) 495-8200

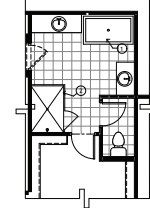
In a continuous effort to improve our product, JKB Living Inc. reserves the right to make changes or modifications to renderings, floorplans, pricing, standard features, options & other building specifications & dimensions without prior notice. Please see sales representative for details. Square footage is approximate based upon design. Floorplans and renderings are artist conception and are subject to change. HomeSmart PV & Associates BRE#01400749



MID CENTURY MODERN ELEVATION

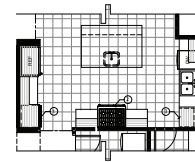


M. BATH - UPGRADE OPTION



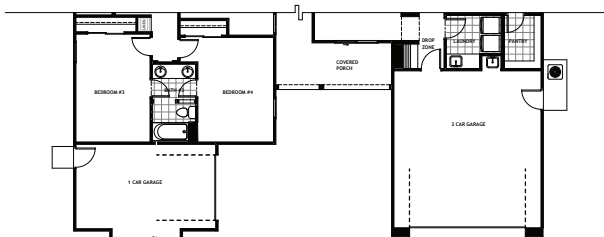
- ① FREESTANDING TUB
- ② CURBLESS SHOWER WITH TEMPERED GLASS ENCLOSURE - OPTIONAL EXTENSION

KITCHEN - UPGRADE OPTION



- ① BUILT IN DOUBLE OVENS
- ② GAS COOKTOP
- ③ BUILT IN MICROWAVE

MODERN FARMHOUSE ELEVATION



SPANISH ELEVATION

